



FARMINGDALE COLLEGE FOUNDATION

ANNUAL REPORT



2020/2021

Emerging Stronger...

2020-21 ANNUAL REPORT

CONTENTS

- 4 A Message from Leadership
- 5 Foundation Board of Directors
- 7 Your Impact
- 8 Financials
- 10 Fundraising Results
- 11 Alumni Donor Spotlights
- 15 A Relationship That Scheins
- 17 Virtual Scholars Career Workshop
- 19 Special Events: Gala & Golf
- 21 In Their Own Words: Students Thank Our Donors
- 24 FSC Scholar Meets Her Donor From a Distance



A MESSAGE FROM THE LEADERSHIP



John S. Nader, PhD
President
Farmingdale State College



Robert Van Nostrand '77
Chair
Farmingdale College Foundation

Dear Alumni, Colleagues and Friends,

While this past year may have seemed like not much was going on, this has been a remarkable year of achievement for Farmingdale State College. Despite adversity, we've emerged stronger. We could not have done it without you. Our alumni and friends helped us raise nearly \$2 million dollars during this past fiscal year. More than ever, it's philanthropy that helped us emerge stronger and keeps us moving forward together. Your gifts opened the doors to scholarship and creativity in the arts and sciences, engineering technology, business, and health sciences. Our vision remains consistent: new academic programs that build on our success, enhancing student engagement, supporting faculty achievement, upgrading our buildings and grounds, and a more ambitious fundraising program that matches the needs and aspirations of our students.

The Wall Street Journal recently examined the ratio of student debt to early career income for the graduates of over 2,000 U.S. colleges. By this measure, a Farmingdale degree in nursing offers our students an excellent return on investment, ranking in the top 25 percent of all U.S. programs. Among the other Farmingdale programs recognized were our business management and marketing programs (tied for first place), and the computer programming and electrical engineering technology programs; each of which were ranked among the top five for return on investment. Thanks to our commitment to affordable excellence and to scholarship aid, 55% of Farmingdale grads leave the College without any debt. Your generous support helps make this possible.

Students are at the heart of all we do, and it shows. The College continues to thrive, even in a challenging environment. Our enrollment remains strong, and we celebrate a student body that is highly diverse. The success of our graduates is remarkable: their earnings rank among the very highest of recent SUNY alums. In addition, Farmingdale's recent alums are stemming the region's brain drain. Over 90 percent of graduates are employed or in graduate programs within six months of graduation. Three-quarters of those employed are working on Long Island. In 2020, the Carnegie Foundation named Farmingdale State College as one of a select group of colleges and universities to receive the Carnegie Community Engagement Classification.

Our position as one of the very best values in higher education is nearly unrivaled. Farmingdale remains a true engine of opportunity for our students. We are truly proud of this amazing community with terrific students, incredibly dedicated faculty and staff, and alumni who value the College and realize the importance of their connection to it. Thank you very much for your support and for your commitment to Farmingdale State College.

Sincerely,

John S. Nader

John S. Nader, PhD

Robert Van Nostrand '77

FARMINGDALE COLLEGE FOUNDATION BOARD OF DIRECTORS

Robert Van Nostrand '77
Foundation Chairman
OSI Pharmaceuticals (retired)

John Witterschein
Foundation First Vice President
Bethpage Federal Credit Union

Maureen Knott '84
Foundation Second Vice President
Henry Schein, Inc.

Robert Sandler
Foundation Treasurer
Farrell Fritz

David Antar
A+ Technology & Security Solutions

Thomas Bogue
Flushing Bank

Richard Catalano
KPMG, LLP

Matthew Colson
Vice President for Development
& Alumni Engagement,
Farmingdale State College

Jerome D'Antone
TD Bank

Sal Ferro '84
Alure Home Improvements

Jason Golden
110 Sand Company

Andreas Grill
DepYmed, Inc.

Veronica Henry, EdD '77
Farmingdale State College (retired)

William Jimenez '10
President, FSC Alumni Association
Stony Brook University

Joseph Moscola
Northwell Health

Vincent Naab '78
Naab Hortco, LLC

John Nader, PhD
President,
Farmingdale State College

Patricia A. Panetta '80
NYC Department of Education

Susan Ring '77
Sterling National Bank (retired)

Steven Rodler '80
Goldberg & Rodler

Howard Rowland '76
E.W. Howell Construction Group

Fred Skolnik '78
Certilman Balin Attorneys

Vincent Tedesco
Total Technology Solutions

The Farmingdale College Foundation is a not-for-profit corporation established in 1969 to support the mission of Farmingdale State College. The Foundation partners with alumni, parents, friends and members of the College community to match strategic priorities with their charitable intentions. The Foundation provides careful and transparent stewardship of all assets held in trust for the benefit of Farmingdale State College.

Dedicated to changing lives and building futures, the Farmingdale College Foundation provides funds each year to meet a variety of critical needs including financial assistance to deserving students and funding for faculty development, academic programs, alumni programs and special projects.

The Foundation's Board of Directors consists of alumni, friends and elected officers. For more information about Farmingdale State College and the Farmingdale College Foundation, please call the Office for Development and Alumni Engagement at 934-420-2142.



ABOUT THE FARMINGDALE COLLEGE FOUNDATION

YOUR IMPACT



Collectively, we raised
\$1,751,646
for Farmingdale assuring
we continue to be an
engine of opportunity to
Long Island and beyond.



The Farmingdale
College
Foundation
surpassed
\$10,000,000
in total net assets.



3,539 gifts
were made
to support
Farmingdale.



180 faculty/staff
made a gift
to support
our students.



495 individuals
made their first
gift to support
Farmingdale.



\$408,682
merit and
need based
scholarships
were awarded
to 207 students.

STATEMENT OF FINANCIAL POSITION

As of June 30, 2021

ASSETS

Current Assets:	
Cash and cash equivalents	\$ 1,046,706
Promise to give	21,647
Accounts receivable	8,760
Prepaid expenses	7,054
Total current assets	1,084,167

Investments:	
Endowments	4,386,385
Other restricted investments	4,710,853

Equipment on loan to college, net of accumulated depreciation	4,214
------------------------------------------------------------------	-------

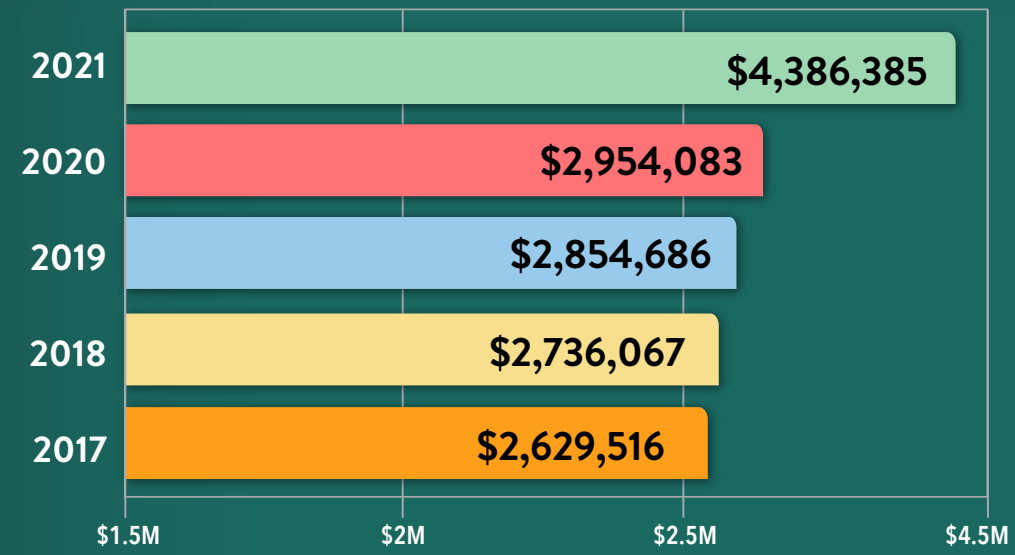
TOTAL ASSETS	10,185,619
---------------------	-------------------

LIABILITIES AND NET ASSETS

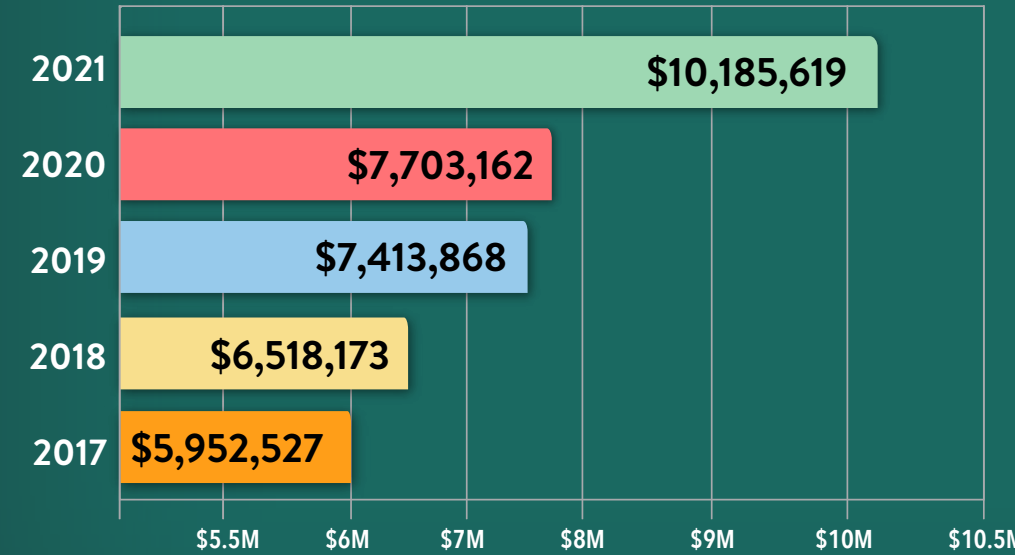
Accounts payable and accrued expenses	\$39,378
Net assets Without donor restrictions	853,242
Net assets With donor restrictions	9,292,999

TOTAL LIABILITIES & NET ASSETS	\$10,185,619
-------------------------------------------	---------------------

ENDOWMENT GROWTH (FYE June 30)



TOTAL NET ASSETS GROWTH (FYE June 30)

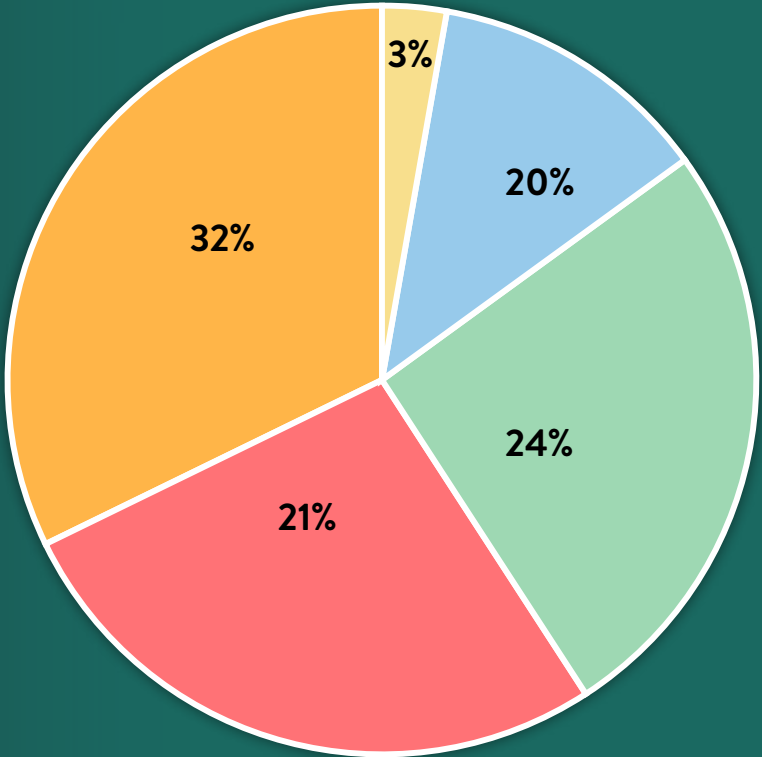


For a copy of audited financial reports, visit farmingdale.edu/foundation



YOUR
PHILANTHROPY
IS WHY WE ARE
EMERGING
STRONGER

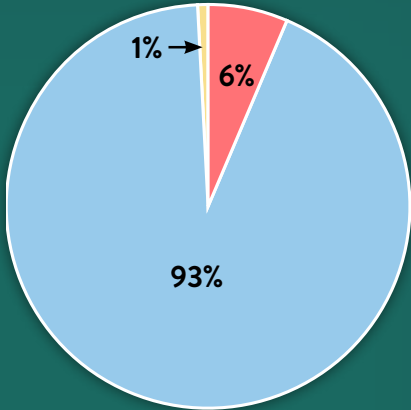
FISCAL YEAR 2020-21 FUNDRAISING RESULTS



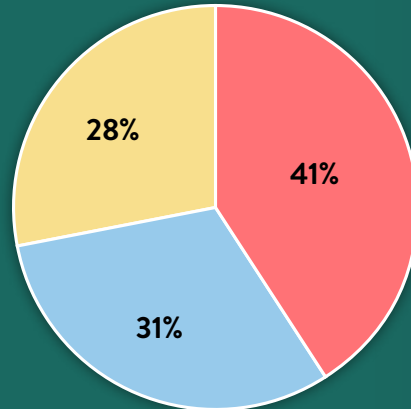
Where did
all the
SUPPORT
come from?

TOTAL DOLLARS RAISED - \$1,751,646

Alumni	32%	(\$561,478)
Corporations	21%	(\$374,005)
Faculty/Staff	3%	(\$53,372)
Foundations	24%	(\$420,584)
Friends	20%	(\$342,207)



1199 DONORS		
Individuals	1114	(93%)
Corporations	77	(6%)
Foundations	8	(1%)



DONOR RETENTION		
1st Time Donors	495	(41%)
Annual Donors	330	(28%)
Returning Donors	374	(31%)

ALUMNI DONOR SPOTLIGHTS

Meet Inge Schaefer '58

Alumna and donor Inge Schaefer '58 attended Farmingdale and said it was the best decision she ever made.

"Farmingdale lit the fire of learning within me. It is Farmingdale that instilled pride in myself and a 'you can do it' attitude. To now have the opportunity to pay it forward by establishing a scholarship for an incoming FSC student overwhelms me with gratitude."

To continue the legacy of a Farmingdale education and learn more about how your gift can transform the lives of our students, contact Michelle Johnson, Director of Alumni Engagement and Stewardship, at 934-420-2369 or michelle.johnson@farmingdale.edu.



Salvatore Ferro's old life stopped and new life began in November 1981. During his first semester at Farmingdale State College, Ferro's father passed away when a drunk driver hit his car. With a widowed mother and three younger siblings at home (his older brother had also passed away in a car accident some years earlier), Ferro had to drop out to help take care of his family and work full time in construction.

But the following year, the call of college and higher education motivated him to re-enroll. It would be harder the second time around with greater need for financial assistance. Fortunately, Farmingdale's Educational Opportunity Program (EOP) was there for him, and he enrolled in the business administration program. "It was life-changing because...I went from quitting college to being recognized on the dean's list and honor roll for two years, president of the business club, and homecoming king." And he managed to do all of that while continuing to work in construction on the weekends and selling clothing at night.

As a business administration student he laid the groundwork for his future success. Today, he's the president and CEO of Alure Home Improvements on

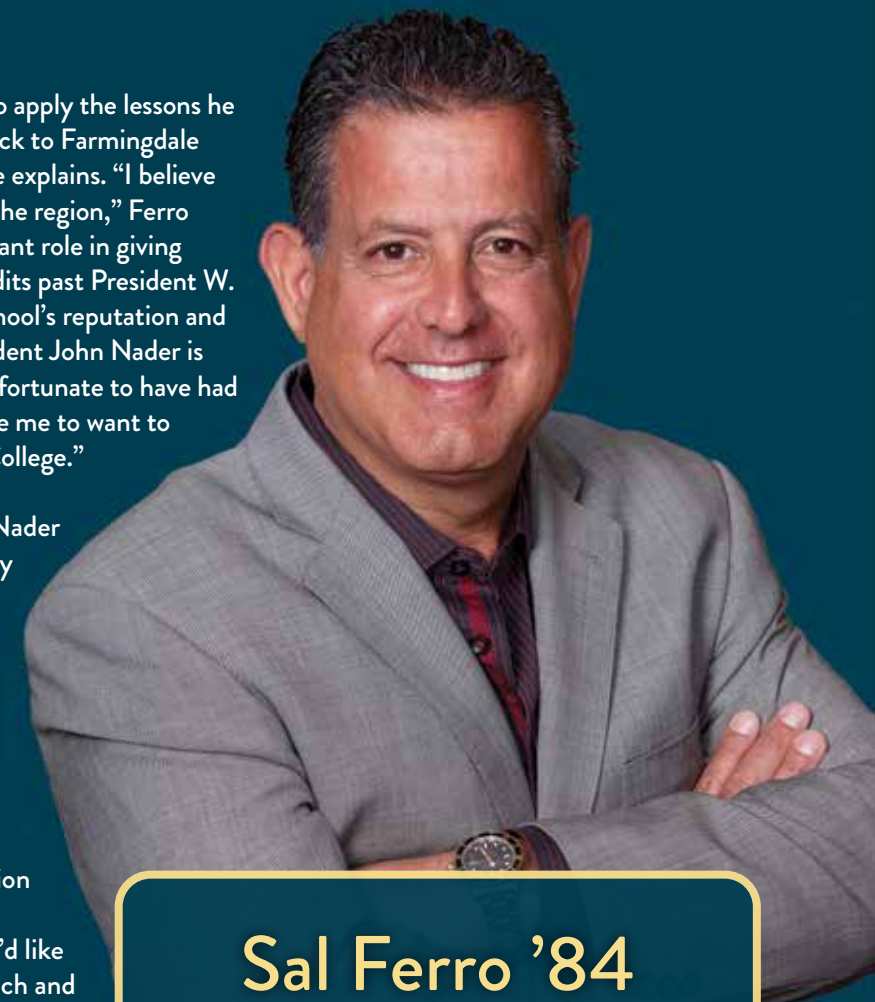
Long Island where he continues to apply the lessons he learned at Farmingdale. "I give back to Farmingdale because they give back to me," he explains. "I believe Farmingdale plays a huge role in the region," Ferro says. "It's really playing an important role in giving Long Island a workforce." He credits past President W. Hubert Keen for elevating the school's reputation and academics and adds, "Now, President John Nader is continuing that effort. We are so fortunate to have had these two gentlemen. They inspire me to want to do good things for Farmingdale College."

The feeling is mutual. President Nader says, "Sal is not only an exemplary alum, he is a remarkable citizen whose generosity has touched many people and places across Long Island. We're proud and grateful for his leadership and support with his most recent heartfelt gift."

That gift is a \$50,000 contribution made to create The Ferro Family Scholarship, an endowed fund. "I'd like to provide an opportunity that each and every year can support a student in some way. The EOP helped provide funding I needed to go to school. I look back at that, and without all that, I wouldn't be here today."

The new Ferro Family Scholarship will support Farmingdale business students.

Photo Caption: President Nader and Sal, with Carol Sung '23. Sung is the current recipient of the Sal Ferro Scholarship.



Sal Ferro '84

*Building
Success and
Giving Back*

Murray Pasternack's *Gift Unwrapped*

Even before enrolling at FSC, Murray Pasternack '60 had developed a keen interest in radio frequency (RF) components — the modules that transmit signals and are most often used in everyday consumer products such as microwaves, garage door openers, and wireless alarm systems. That passion propelled him to spectacular success in the RF industry and, most recently, to the status of one of Farmingdale's largest alumni benefactors.

Pasternack donated \$500,000 to support the Murray Pasternack Endowed Scholarship in Engineering as part of the College's anticipated Honors Program, and recently made a second gift of \$500,000 for a total impact of 1 million dollars. The gift will provide 20 annual scholarships to Engineering Technology honors students. Separate from and in addition to their need-based financial aid and other scholarships, it affords these students the ability to devote more time to co-curricular pursuits and the applied learning opportunities that define the Farmingdale experience.

"I strongly believe that the Agricultural and Technical Institute at Farmingdale — now known as FSC — provided me with the depth of knowledge I needed to succeed in my first chosen field, the electronics industry," Pasternack says. "Now that I am finally transitioning to retirement, I am looking to say 'thank you' to those who helped me in my long journey."

Originally from Franklin Square, Pasternack received his AAS degree in Electrical Technology at a time when the landscape of the College was literally different, and the RF and microwave industry was in its infancy. But just as FSC grew and transformed itself, so did RF technology. As Founder and CEO of Pasternack Enterprises in Irvine, California, from

1972 to 1992, Pasternack fundamentally changed the way RF components were sold throughout the industry. His signature catalog greatly simplified the ordering process and became the industry standard.

Pasternack's gift will provide funds for research opportunities, intercollegiate academic competitions, attendance at professional conferences, and travel expenses to participate in competitive and prestigious internships.

The College seeks ways to recognize academic excellence among students who demonstrate financial need," President Nader says. "Mr. Pasternack's gift will help the College establish a long-planned Honors Program that will set FSC apart from our peer institutions in the region."

In fact, Pasternack was just the kind of student he seeks to assist now. He worked nearly full time while attending classes — a familiar story among FSC alumni, who still come largely from middle-income and underrepresented populations. FSC continues to provide that kind of opportunity, expanding academic programs, equipping students with critical thinking skills that lead to excellent career paths, and now extending the Pasternack Scholarship Fund.

"The Farmingdale Foundation is dedicated to changing lives and building futures, and Mr. Pasternack's gift will do just that," says Matthew Colson, Vice President for Development & Alumni Engagement. "We're grateful for Murray's leadership and generosity and look forward to more of his fellow alumni coming forward to join him in this special way."

*"Now that I am
finally
transitioning to
retirement,
I am looking
to say
'thank you'
to those who
helped me in
my long journey."*

— Murray Pasternack '60

Pictured above: Judy Berkowitz and Murray Pasternack

A Relationship *That Scheins*



fortunate and grateful for the philanthropic efforts of Henry Schein Cares,” Dr. Lynn Marsh RDH, Dental Hygiene Department Chair & Professor. “The team’s support has been greatly influential in our dental hygiene students providing the gold standard in preventive oral health care.”

In addition to the Company’s philanthropic support, the people at the heart of Team Schein are always here for us. From its sales and equipment representatives, to its leadership team, the organization truly cares about and engages with its partners. Since the beginning of our relationship, Maureen Knott (Class of 1984), Vice President, Omnichannel Marketing, Henry Schein Dental, has served as a Foundation Board Member for the College, serves as the Second Vice President on the Executive Board and is a member of the Curriculum Advisory Committee for the Dental Hygiene Department. She has been key to helping ensure our needs are met, and our interests and insights are shared among her industry peers.

“Henry Schein is focused on helping health happen and is happy to invest

Since 2014, Farmingdale State College’s Dental Hygiene Department has been working with Henry Schein to ensure our faculty, staff and students have the products and support to continue to make a difference in patient care. In addition to being our Long Island neighbor, Henry Schein, the global health solutions company, is a trusted ally with whom we partner closely to effect impactful change for our community, and beyond.

Most recently, over the course of three years, Henry Schein has donated more than \$325,000 in cash and products through its corporate social responsibility program, Henry Schein Cares. These essential products - including 3D printers, hand instruments, teeth whitening units, caries detection units, and more – help build capacity and skillsets for the next generation of health care professionals and enable the provision of care for underserved patient populations at the Dental Hygiene Care Center. “The Dental Hygiene Department at Farmingdale State College is

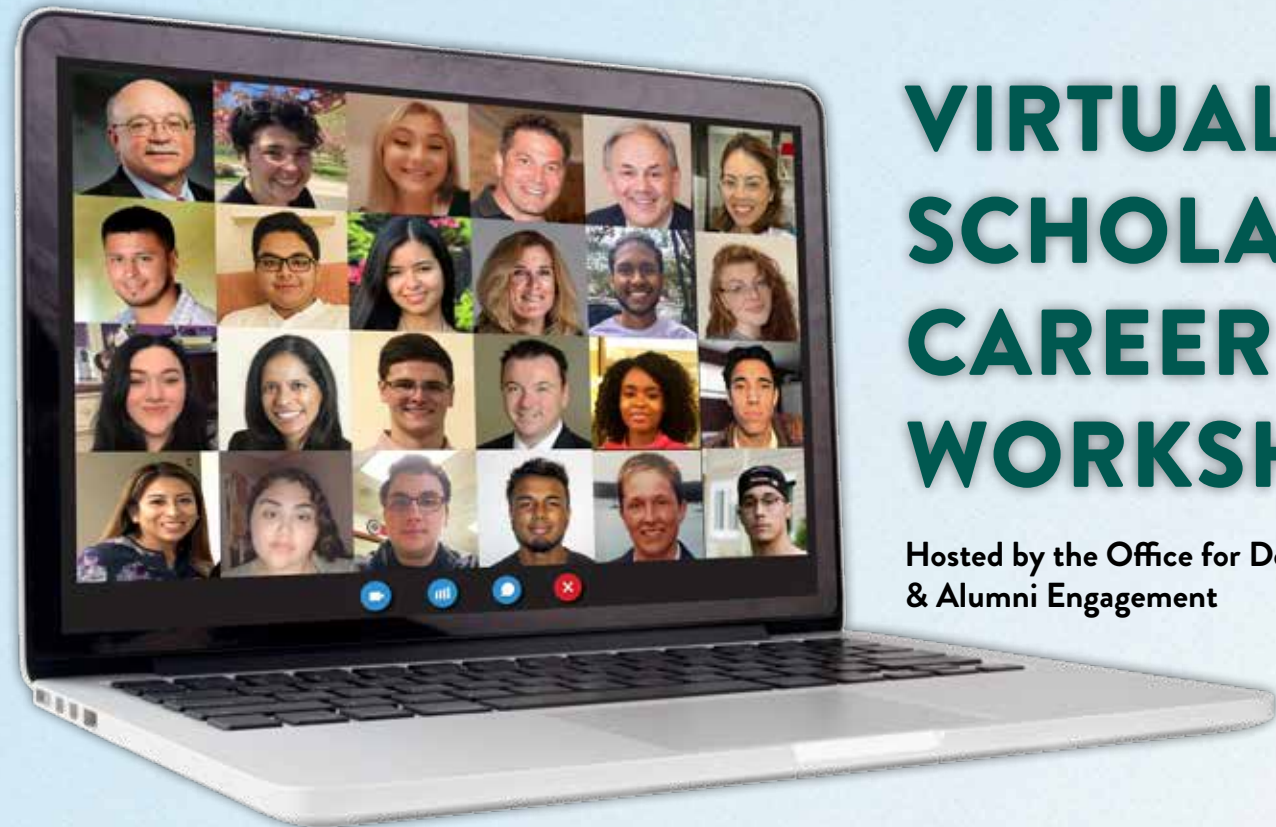


in the future of the hygienist since good oral health equates to better overall health,” Maureen Knott, VP Omnichannel Marketing, Henry Schein Dental. “As an alumna, it is personally gratifying that we at Henry Schein are able to support Farmingdale education of tomorrow’s hygiene community, and together ensure the provision of dental care for communities in need.”

Henry Schein has also supported the financial needs of our students. Each year, the Company offers \$4,000 in hygiene scholarships to select students. These funds help support the academic careers of our students, and dentistry’s future leaders.

“Henry Schein continues to be a model corporate citizen and an ideal business partner,” Dr. John S. Nader, President, Farmingdale State College. “Through their generosity and support we have been able to further strengthen our nationally recognized Dental Hygiene program.”





VIRTUAL SCHOLARS CAREER WORKSHOP

Hosted by the Office for Development & Alumni Engagement

On March 18, the Office for Development & Alumni Engagement held its first-ever virtual workshop exclusively for student scholarship recipients featuring a panel discussion on career advice by three well-established and successful FSC scholarship donors. The event was moderated by Rena Varghese, Executive Director of the Nexus Center for Applied Learning & Career Development. President John Nader attended as did Matthew Colson, Vice President of Development & Alumni Engagement, Babette Lasky, Manager of Scholarships and Donor

Stewardship, and Michelle Johnson, Director of Alumni Engagement and Stewardship for an audience of 30 scholarship recipients.

Alumni panelists featured Art Corwin '76, President of Railroad Construction Company, Inc. Art is also the President of The Corwin Family Foundation, which awards two scholarships annually to students in the School of Engineering Technology. Maureen Knott '84, Vice President of Product Advertising and Marketing at Henry Schein, participated in the

discussion. Henry Schein awards two scholarships annually to students in the Dental Hygiene Program. Farmingdale native and philanthropist Jason Golden, President of 110 Sand Company also served as a panelist. 110 Sand Company awards two scholarships annually to students in Construction Management Engineering Technology, Bioscience or Business Management.

The Scholars Workshop program originated as a way to connect alumni and donors directly with scholarship students to provide a comprehensive

understanding of philanthropy and the importance of their generosity. It was also designed as a way for scholarship recipients to meet their scholarship donors in a meaningful way when in-person events are not currently possible.

Rena Varghese had this to say about the Scholars Career Workshop, "Collaborating with Alumni Engagement is a natural partnership, which furthers the mission of the Nexus Center to support students in achieving their career goals. This program was an ideal way to connect student scholars to industry leaders, and the advice and encouragement shared by our generous benefactors were especially meaningful given the challenges of the current climate."

During this lively, interactive event, students were able to gain practical career advice and learned about the panelists' career journeys. Art Corwin remarked, "Interesting to me was that the panelists have been successful but all took very different paths to get there. Hopefully that showed the students anything is possible. I enjoy interacting with young people. It confirms that the future is bright!"

Panelists shared why they were so passionate about supporting students. All panelists agreed that the success of an individual is education. Mr. Corwin stated that the little bit that donors do makes a difference and that it is exciting for him to be able to help young people. He is proud and happy to be able to do this. Mr. Golden's family has been in Farmingdale for generations and he recalls growing up and playing on campus when he was young.

He stated that it means a great deal to him to be able to give back to his community. Ms. Knott recalls having wonderful memories while attending Farmingdale and making life-long friendships. Farmingdale gave her a foundation to her success. She enjoys being the collaborative bridge between Farmingdale State College and Henry Schein.

Dr. Nader discussed the importance of mentorship. Whether it be a faculty or staff on campus, a co-worker or perhaps a friend, it is very important to develop mentorship relationships with somebody that knows you and to whom you can turn to for advice with difficult situations. Ms. Knott referred to the importance of mentorship in your industry to help guide you along the way. Sonia Chemerisov, a senior Bioscience major, credits her success throughout college and getting accepted into dental school to the mentors she was surrounded by at FSC. She stated that she cannot imagine how she would have made it without their support.

Matthew Colson advised students to contact Michelle Johnson in the Alumni Office or reach out to Rena Varghese at the Nexus Center to introduce the students to alumni in their field. The Nexus Center also helps to connect students to employers and applied learning. Some other topics of conversation included job searching, interviewing, and stress management during these unprecedented times.

Maureen Knott ended the program by encouraging the scholars noting anything is attainable, nothing is out of reach and not to be afraid. "Enjoy life and grasp it. Don't let anything hold you back."

"... all the panelists have been successful but all took very different paths to get there. Hopefully that showed the students anything is possible. I enjoy interacting with young people. It confirms that the future is bright!"

- Art Corwin '76
President,
The Corwin Family Foundation

THE 2021 GOLF CLASSIC



After a full year hiatus, the Farmingdale Foundation in collaboration with the Alumni Association and Athletics, returned to the greens at the Hempstead Golf and Country Club to host the annual FSC Golf Classic on Monday, June 7th. Dr. James M. Paci, Farmingdale State Athletics Team Doctor and Director of Orthopedics and Sports Medicine at Orlin & Cohen Orthopedic Group, was honored at what proved to be a most memorable day for many reasons. Northwell Health was this year's title sponsor and several other loyal Farmingdale benefactors including 110 Sand, Farrell Fritz, and The Schwarz Institute for Physical Therapy & Performance stepped up their sponsorship levels all to support Paci and the Farmingdale Fund.

The outing was sold out weeks in advance with 36 foursomes participating and it was clear Farmingdale Ram pride was off the charts by the high energy felt both on the course and in the club during the full cocktail party. The sunshine and warm weather only enhanced the excitement of the day and guests enthusiastically paused for photos on the course and purchased raffle tickets to add to the fundraising efforts of the event. Perhaps most inspiring of all was the dollars raised at this year's outing, totaling over \$130,000 for Farmingdale - the highest in FSC's history.

President Nader remarked, "Farmingdale is great at coupling fun with philanthropy. As evidenced by the packed room here tonight, now more than ever the FSC community is eager to step out and step up for the College, and to honor Dr. Paci's remarkable career."

When accepting the Ram's Horn Award for his outstanding service and commitment to Farmingdale State College, Dr. Paci said it best, "I was very fortunate to be raised in a family where academics and athletics were equally important and I think Farmingdale finds that balance and realizes how important sports are as a part of your education. It really rounds out leadership and rounds out success. It teaches us to reach for the stars and go above and beyond ourselves."

SAVE *the* DATE
for the
2022 Golf Classic
JUNE 6, 2022



"THE BEST EVENT YOU WON'T ATTEND"

With social distancing and gathering restrictions making an in-person event impossible, the Farmingdale Foundation and Office for Development & Alumni Engagement faced a difficult challenge in their fund-raising efforts—and came up with a unique solution.

So the President's On-Demand Gala was born, saving the Foundation's signature fundraising effort to support the College during the unusual times created by the COVID-19 pandemic. A pre-recorded virtual event accessible to alumni, business partners, and other benefactors of FSC whenever they chose to view, the Gala had all the trappings of a live event, but without guests in formal dress seated at tables in a ballroom. And so it was billed as "The Best Event You Won't Attend."

To create a fun and engaging event, each guest was mailed a customized "Gala Box" with the "wine & cheese, when you please" theme, featuring champagne, FSC signature wine glass and a Charcuterie. A raffle ticket was even tucked away in each box giving the participant a chance to win an exciting prize. A Silent Auction was available to bid on sports memorabilia and group experiences. The

program was a production that premiered "On Demand" in November as the gift boxes simultaneously were arriving on doorsteps of the guests.

An entertaining video of the program created by the design team in the Office of Institutional Advancement showcased the best of Farmingdale in 2020, forecasting a relentless pursuit for excellence in 2021. The video featured two stirring performances from Billy Joel band member and singer/songwriter Michael DelGuidice. The virtual Gala was indeed a celebration of the entire Farmingdale campus community and its perseverance, determination, and steadfast commitment to the College's mission and its students.

"The success of the virtual Gala reflects the remarkable energy, dedication and creativity of the Foundation and Development & Alumni Engagement staff," President Nader said. "The unique event attracted more attention and institution-wide support than ever."

Over 300 loyal Farmingdale alumni, faculty, staff, corporate sponsors and friends participated, raising over \$130,000 to support areas of the College's greatest needs.

"I watched the presentation—and wow!—it was spectacular," said Jerome D'Antone, Vice President at TD Bank. "All of TD's guests loved it and were raving about the Gala box."

He was just one of the guests who was happy he did—or, rather, didn't—attend.

THE 2020 ON-DEMAND PRESIDENT'S GALA



*"I watched the
presentation—
and wow!—it was
spectacular."*

- Jerome D'Antone,
Vice President at TD Bank

IN THEIR OWN WORDS...

LILLIAM BATISTA

Class of '22
Dental Hygiene
Betsy Smith Cronin Memorial Scholarship

Receiving a scholarship is definitely a huge accomplishment for anyone. But for me, a student that has been speaking/learning English for a little over 6 years, is an honor! Since I decided to go to school I heard from different people that my English was not good enough to go to college yet and that my writing was too simple to keep up with college essays, but I never let it stop me from following my dreams. This award is now the biggest proof that yes, I can do this. I can do this, and so much more and I can do it really well! Mr. Cronin, thank you so much for this opportunity. This award means a lot to me and my family! It is an honor to be the recipient of the Betsy Smith Cronin Memorial Scholarship.



HENRY WU CHEN

Class of '25
Aeronautical Science:
Professional Pilot
Theresa Patnode Santmann
Transfer Scholarship

One may have the determination or the desire to accomplish their goals but without the financial assistance, it may be difficult. Receiving this scholarship has helped me tread away from financial burden and allowed me to pursue my dream of becoming a professional pilot which is definitely not cheap. Mrs. Theresa Patnode Santmann, I want to say thank you a thousand times for every dollar you have donated! Your generous acts of kindness really allowed me to have one less thing to worry about in terms of covering my financial bill.



ANGELA TODARO

Class of '22
Computer Programming & Information Systems
IEEE Scholarship

First, I want to express how grateful I am to receive this scholarship. It was very unexpected and it made me feel very happy and thankful. Your generosity has inspired me to continue succeeding each semester until I graduate. I have put in a lot of effort and succeeded every semester, and I am very thankful that I have some recognition for my hard work.

During these difficult times involving COVID-19, this scholarship has alleviated some of my concerns and worries. Your kindness shows that there are selfless individuals in this world, and I highly appreciate your support.

MEERO KALO

Class of '21 - Aviation Administration
James Durant Aviation Scholarship

I would like to say thank you from the bottom of my heart. As an immigrant to this country, I never thought I would accomplish so much in 10 years. I am here to study, learn, and become successful to make my family proud here and back home!

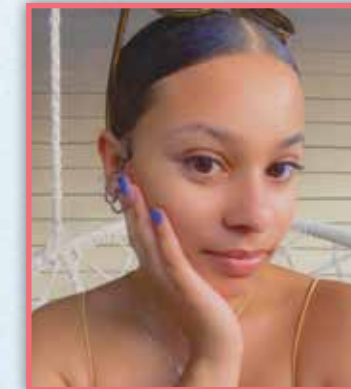
I appreciate the generosity and the help as it will get me a few flight hours and much needed experience! Receiving this scholarship has encouraged me to do the same with future generations of aviators. I would love to help another fellow aviator in the future once I am all settled! Thank you very much. It is much appreciated!



MAYA ELMORE

Class of '23
Nursing
Dr. Veronica Henry Nursing
Scholarship

This scholarship has helped to encourage me to continue pursuing my goals and has pushed me to continue to obtain good grades throughout all semesters. It also allows me to keep going no matter what and to never give up, even if there are obstacles. I would like to thank Dr. Henry for her generosity and kindness. This scholarship has alleviated some of the financial stress of tuition and has allowed me to focus on my studies.



IN THEIR OWN WORDS...

HOLDY CHAUVETTE
Class of '22
Mechanical Engineering Technology
D3 Scholars Program

I would like to say a special “Thank you” to my donors as their kind and generous gesture will help me quite a lot with my academic endeavors. A gesture like this will encourage me to give to others. I really appreciate it and I will be able to focus on studying more as I will not have to work as hard to pay for the amount my financial aid will not be able to cover. Just like you have helped me today, I hope I will be in financial stability to help others in the future the same way. God bless you and your family.



CHRISTOPHER CONNOR
Class of '24
Professional Communications
Barnes & Noble Scholarship

This scholarship has impacted me by allowing me to continue going to college at a place that I adore. This keeps me motivated to work even harder to learn and evolve as an individual. I became passionate about Professional Communications when I saw how diverse of a field it truly is. The possibilities for job opportunities are seemingly endless and a good majority of them involve putting yourself out there and letting your personality shine through to others. This allowed me to become passionate about this major because I come from a background involving entertainment, acting and show business. Thank you so much for your incredible generosity. Without your support, I wouldn't be where I am today, going to one of my dream colleges.

THE RICHARD & CAROLYN OVERTON SCHOLARSHIP MEET & GREET



Gabriela Carpio



Mr. & Mrs. Richard & Carolyn Overton

Donors Richard and Carolyn Overton are passionate about Farmingdale State College and its mission in applied learning. Mrs. Overton grew up in Farmingdale and had seen the growth of the College from its early days as “The Aggie School”. Mr. Overton came to New York from Connecticut to run a pharmaceutical business over 40 years ago. The Richard & Carolyn Overton Scholarship was born after Mr. Overton led an exhaustive search for facilities management professionals capable of running a sophisticated pharmaceutical production operation on Long Island. FSC through the Farmingdale College Foundation introduced him to their Facilities Management program

and interns from that program later became valued employees. Mr. and Mrs. Overton have been enthusiastic supporters of FCF's mission to supply scholarships to deserving students ever since.

A virtual meet and greet was held on March 9, 2021, with Richard and Carolyn Overton in Florida, and their current scholarship recipient, Gabriela Carpio, a sophomore student majoring in Construction Management Engineering Technology. Joining them were Gabriela's parents, President John Nader, Matthew Colson, Vice President of Development & Alumni Engagement, Barbara Christie, Dean of

the School of Engineering Technology and Babette Lasky, Manager of Scholarships and Donor Stewardship.

Gabriela presented a research project demonstrating the different phases of a construction job site, the use of materials and the process of the timeline from architectural plans to completion.

Gabriela and her parents expressed sincere gratitude for the Overton's generosity. Their support is the reason Gabriela is realizing her college dream.



This report was produced by:

OFFICE FOR DEVELOPMENT & ALUMNI ENGAGEMENT

Matthew J. Colson
Vice President of Development & Alumni Engagement
colsonmj@farmingdale.edu

Kas Carey
Director of Engagement Strategy
careyka@farmingdale.edu

MaryEllen DeCicco
Director of Corporate Engagement
deciccm@farmingdale.edu

Chantal Etrasco
Administrative Assistant II
chantal.etrasco@farmingdale.edu

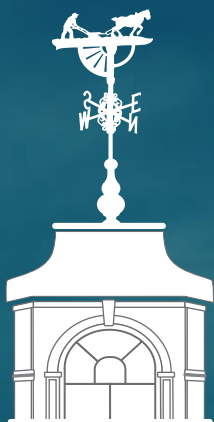
Michelle Johnson
Director of Alumni Engagement & Stewardship
michelle.johnson@farmingdale.edu

Babette Lasky
Manager of Scholarships & Donor Stewardship
laskyb@farmingdale.edu

Ann Noss
Manager of Accounting & Finance
ann.noss@farmingdale.edu

Magdalena Sanchez Overton
Director of Advancement Services
overtom@farmingdale.edu

Joan Urbanowski
Asst. Director of Advancement Services
joan.urbanowski@farmingdale.edu



Farmingdale College Foundation

2350 Broadhollow Road | Horton Hall, Room 120 | Farmingdale, New York 11735

tel: 934-420-2142 | online: farmingdale.edu/foundation

Questions or comments? Please email us at foundation@farmingdale.edu